

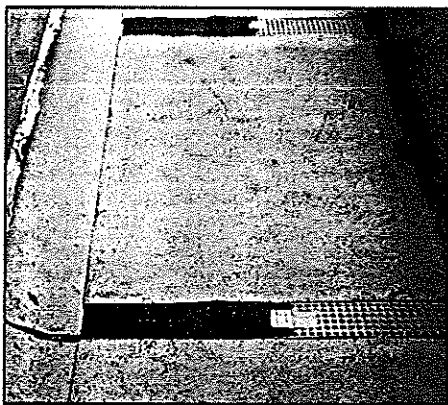
One Consultant's Opinion

Heavy Duty Walkways

A Simple Suggestion for "Joint-less" Protection

by Phil Dregger, PE, RRC, Technical Roof Services, Inc., Martinez, Calif.

Ray Jenkins, a building specialist at one of Pacific Bell's buildings in Oakland, Calif., wanted a surface suitable for rolling equipment dollies over and yet that would provide suitable protection for his new Siplast modified



bitumen roof. Jenkins explains, "I didn't want a walkway with all of those gaps between the panels. Every time I would run over one of them,



the jolt almost tripped over my equipment. Sometimes the wheels even dinged the roof membrane between the panels."

Conventional heavy duty rooftop walkway panels consist of three foot by four foot, ½ inch to ¾ inch thick semi-rigid boards composed of asphalt, fillers, and reinforcing fibers; and are installed with 1½ inch to 3 inch gaps between the panels. Installing the boards without a gap

can impede surface drainage.

An easy solution to this jolting dilemma is to install a double layer of ½ inch thick panels with strips of a drainage medium similar to drainage mediums often installed beneath plaza deck pavers, between the panels of the lower level. The panels in

the top layer can then be butted together to form a relatively smooth surface without impeding drainage.

The accompanying drawing illustrates the jolt-less walk protection system. Note this system must be maintained to keep the drainage medium clear of debris.

"Installing the boards without a gap can impede surface drainage."